



COMPONENTS OF PACKAGING:

1 body, 1 upper section, 1 cap, 1 fixture, 1 light source, 1 glass shade, 1 pair cotton gloves, 1 installation manual, 3 M6x16 set screws, 3 M6x25 set screws, 1 M4x16 brass set screw, 1 M4x4 set screw

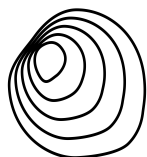
WARNING:

Installation must be carried out by a qualified electrician only.

Switch off power at main circuit panel prior to installation!

The manufacturer assumes no liability for damage occurring in transport or resulting from incorrect installation.

Instalation time: 45min. / 1 persons



BROKIS®

BROKIS S.R.O.
ŠPANIĚLOVA 1315/25
163 00 PRAHA 6 - ŘEPY
CZECH REPUBLIC

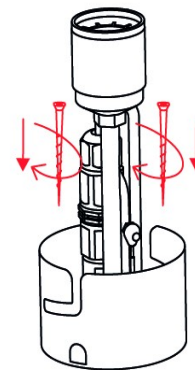
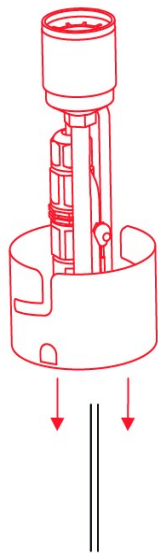
ORG. ID 64940799
VAT ID CZ64940799
C 42174 MĚSTSKÝ SOUD
V PRAZE

TEL +420 567 211 517
TECHNICAL@BROKIS.CZ
INFO@BROKIS.CZ
WWW.BROKIS.CZ

1. INSTALLING THE INNER BODY

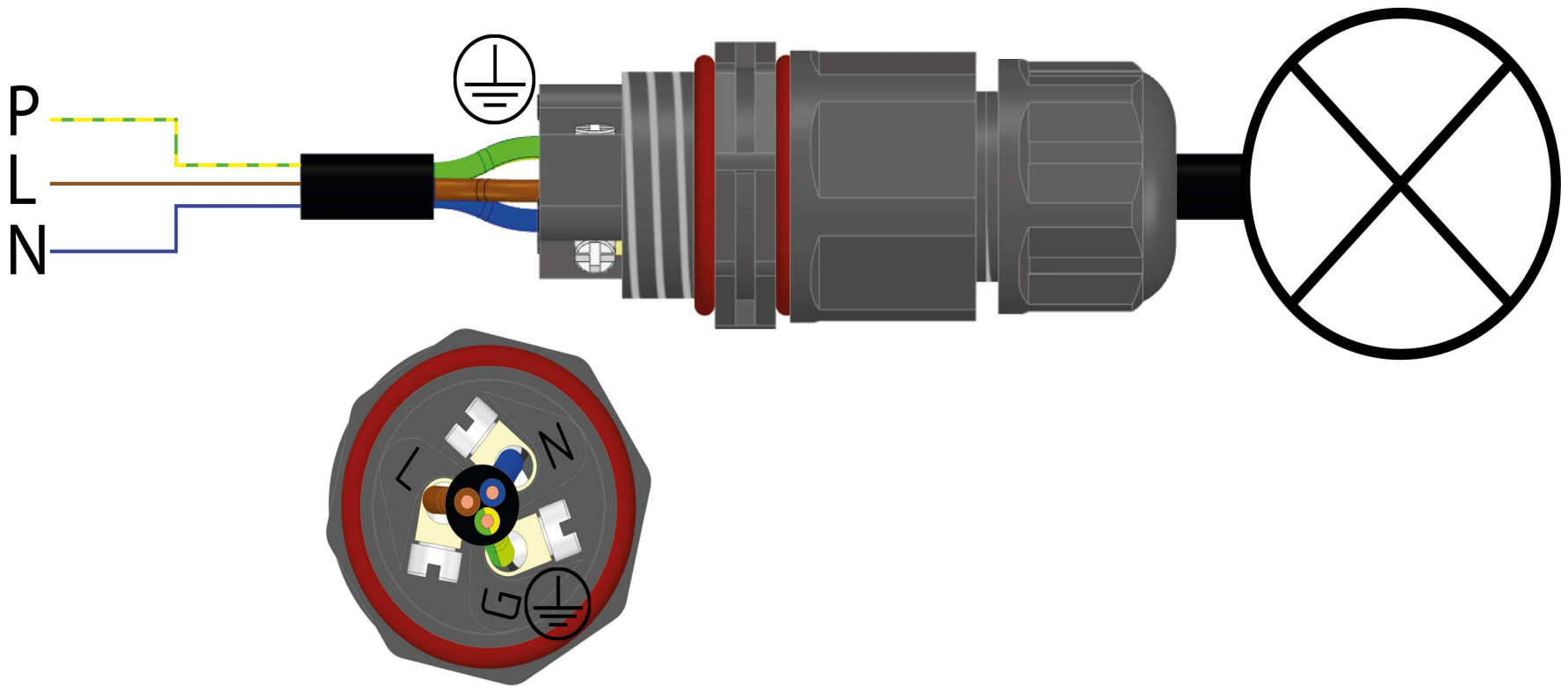
Use anchors of sufficient strength (not included). With regard to various types of material, we recommend consulting installation with an expert.

Pass the power cable through the opening in the fixture and secure to a solid base using screws.



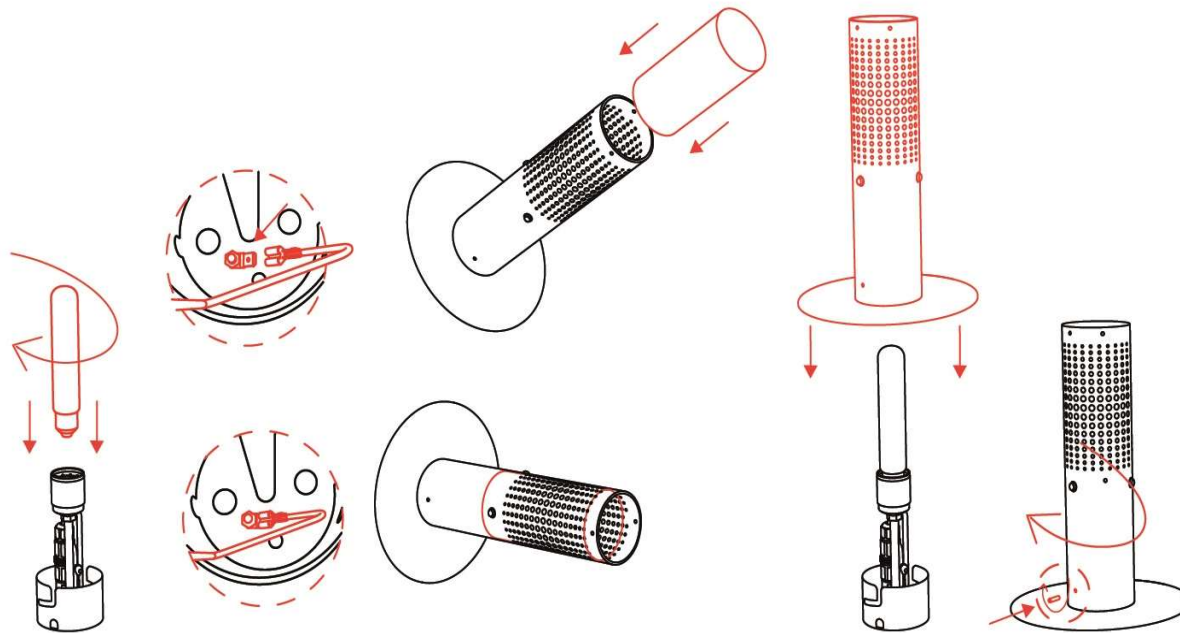
2. CONNECTING THE LIGHT TO THE PREMISES WIRING

Connect the light to the premises wiring according to the connection diagram. Care must be taken to ensure the individual wires are stowed in the terminal module.



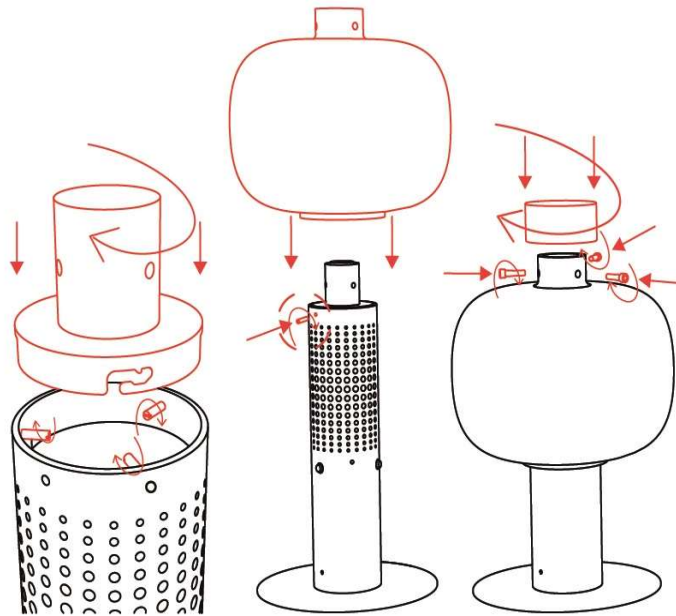
3. INSTALLING THE LIGHT

- Screw the light source into the fixture.
- Connect the ground wire to the connector on the fixture.
- Insert the diffuser into the top of the body. When doing so, hold the body at an angle to prevent damage to the diffuser, then return it to a vertical position. Insert the diffuser into the light through the open side!
- Position the body on the fixture and turn it to the right until the brass set screw (M4x16) is opposite the hole in the fixture.
- Turn the brass set screw until snug.



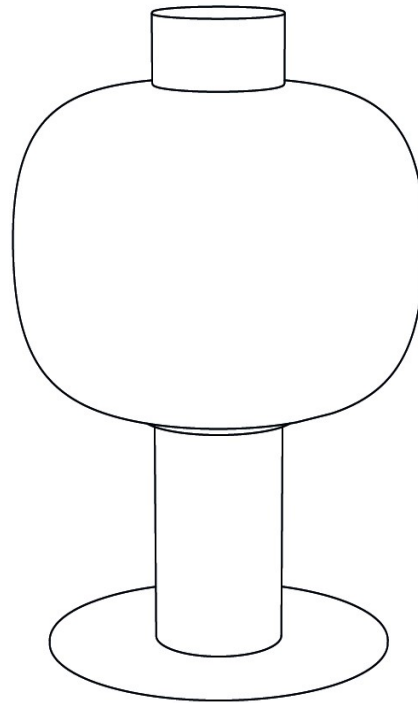
4. INSTALLING THE LIGHT

- Turn the 3 set screws (M6x16) from the inside of the body so that they are flush with the outer surface of the light.
- Position the upper section on the set screws (M6x16) in the top of the body and turn it to secure the bayonet.
- Tighten the set screw (M4x4) at the top of the body to prevent the upper section from turning.
- Position the glass shade on the body with the larger opening facing downwards and install 3 set screws (M6x25) into the holes in the upper section.
- Screw the cap onto the upper section.



5. SWITCHING ON THE LIGHT

Restore power at the main circuit panel and verify that the light works properly.



INSTALLATION MANUAL

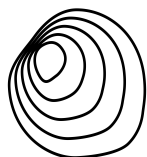
BONBORI PC1167

Floor light



The luminaire can be treated with common cleaning agents.
Do not use solvents or abrasive cleaners (powders).

PRIOR TO SHIPPING, THE FUNCTIONALITY OF EACH LIGHT AND ITS COMPONENTS IS THOROUGHLY TESTED. THE MANUFACTURER ASSUMES NO LIABILITY FOR THE MISHANDLING OF PRODUCTS.



BROKIS®

BROKIS S.R.O.
ŠPANIELOVA 1315/25
163 00 PRAHA 6 - ŘEPY
CZECH REPUBLIC

ORG. ID 64940799
VAT ID CZ64940799
C 42174 MĚSTSKÝ SOUD
V PRAZE

TEL +420 567 211 517
TECHNICAL@BROKIS.CZ
INFO@BROKIS.CZ
WWW.BROKIS.CZ