



### COMPONENTS OF PACKAGING:

1 body, 1 upper section, 1 cap, 1 fixture, 1 light source,  
1 glass shade, 1 pair cotton gloves, 1 installation manual,  
3 M6x16 set screws, 3 M6x25 set screws,  
1 M4x16 brass set screw,  
1 M4x4 set screw, 1 power cable with connector

### WARNING:

**The manufacturer assumes no liability for damage resulting from incorrect assembly. When unpacking the light, do so with regard for its material composition – the main components are made of glass.**

**Wear the cotton gloves included with the light when unpacking and assembling it.**

**Instalation time: 30 minutes/1 person**



BROKIS®

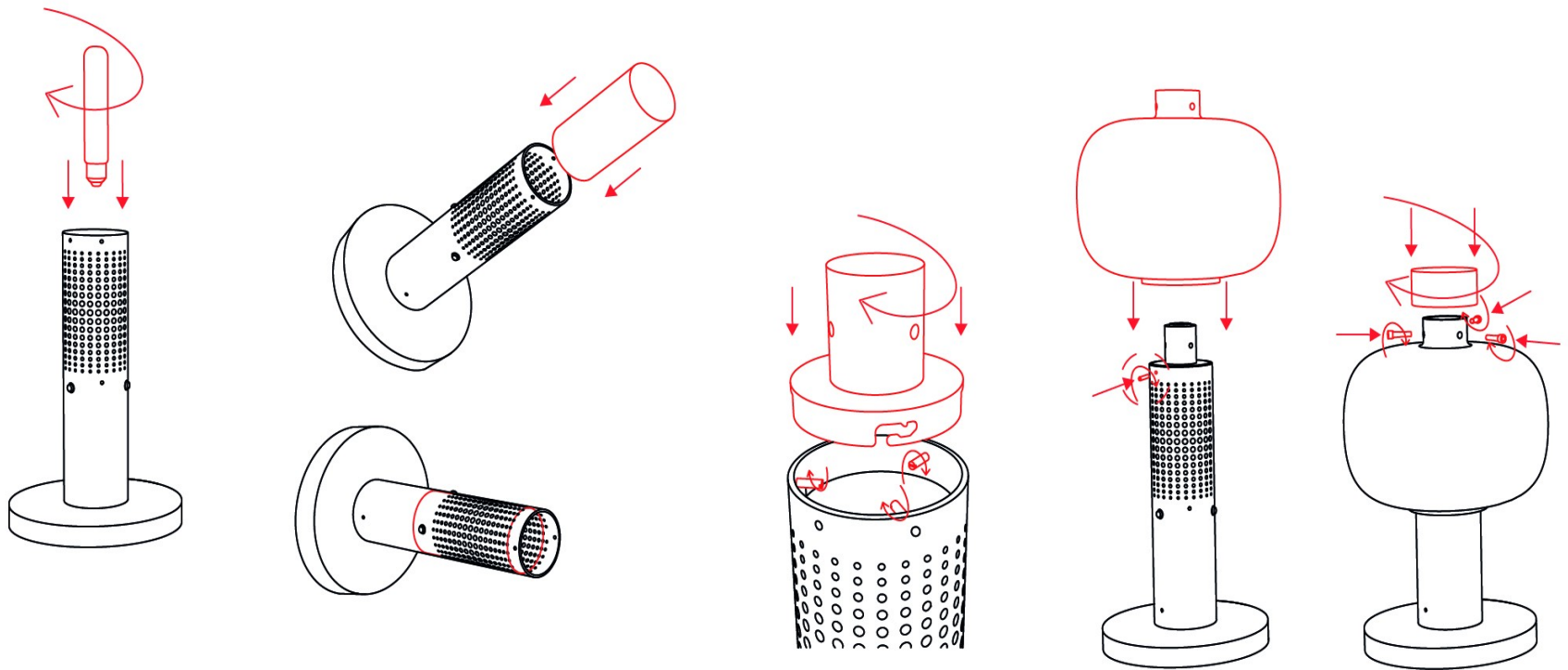
BROKIS S.R.O.  
ŠPANIELOVA 1315/25  
163 00 PRAHA 6 - ŘEPY  
CZECH REPUBLIC

ORG. ID 64940799  
VAT ID CZ64940799  
C 42174 MĚSTSKÝ SOUD  
V PRAZE

TEL +420 567 211 517  
TECHNICAL@BROKIS.CZ  
INFO@BROKIS.CZ  
WWW.BROKIS.CZ

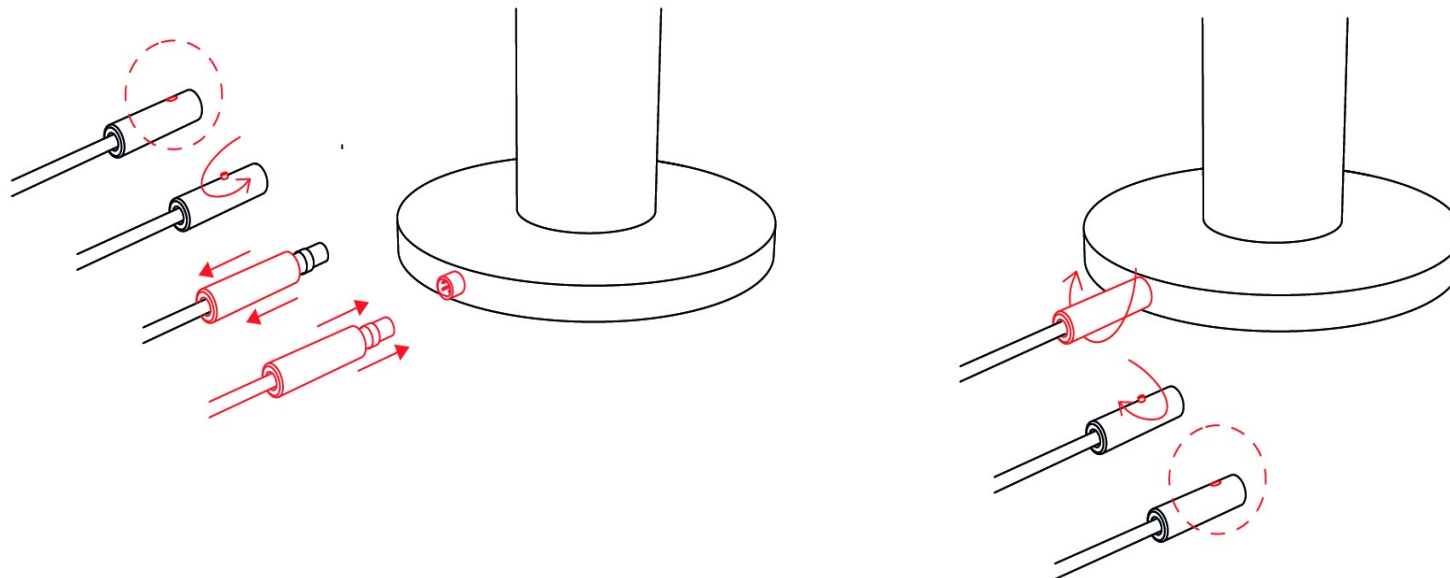
## 1. ASSEMBLING THE LIGHT

- Screw the light source into the fixture.
- Insert the diffuser into the top of the body. When doing so, hold the body at an angle to prevent damage to the diffuser, then return it to a vertical position. Insert the diffuser into the light through the open side!
- Turn the 3 set screws (M6x16) from the inside of the body so that they are flush with the outer surface of the light.
- Position the upper section on the set screws (M6x16) and turn it to secure the bayonet.
- Tighten the set screw (M4x4) at the top of the body to prevent the upper section from turning.
- Position the glass shade on the body with the larger opening facing downwards and install 3 set screws (M6x25) into the holes in the upper section.



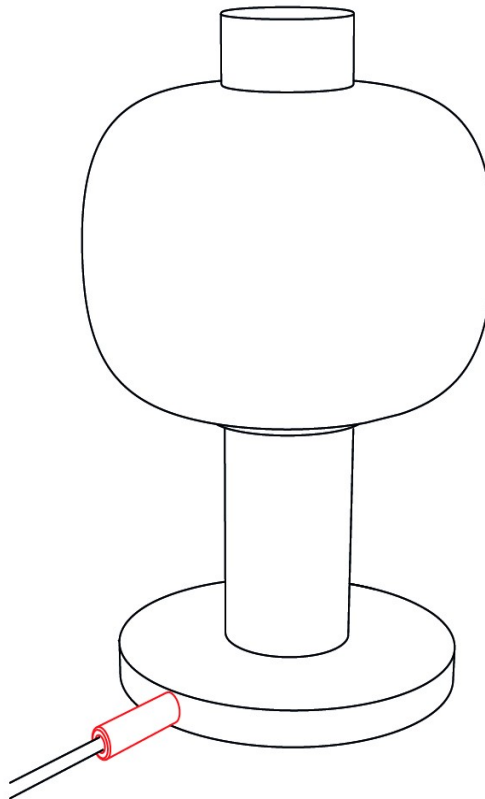
## 2. CONNECTING THE LIGHT

Loosen the set screw on the power cable connector. Insert the cable connector into the connector on the light and turn the sleeve to close. Retighten the set screw in the connector.



### 3. SWITCHING ON THE LIGHT

Plug the power cable into an electrical outlet and verify that the light works properly.



# INSTALLATION MANUAL

## BONBORI PC1165

Table light, Floor light



**The light can be cleaned using common cleaning agents. Never use solvents or abrasives (scouring powder).**

**PRIOR TO SHIPPING, THE FUNCTIONALITY OF EACH LIGHT AND ITS COMPONENTS IS THOROUGHLY TESTED. THE MANUFACTURER ASSUMES NO LIABILITY FOR THE MISHANDLING OF PRODUCTS.**



**BROKIS®**

BROKIS S.R.O.  
ŠPANIELOVA 1315/25  
163 00 PRAHA 6 - ŘEPY  
CZECH REPUBLIC

ORG. ID 64940799  
VAT ID CZ64940799  
C 42174 MĚSTSKÝ SOUD  
V PRAZE

TEL +420 567 211 517  
TECHNICAL@BROKIS.CZ  
INFO@BROKIS.CZ  
WWW.BROKIS.CZ